

## MAYE RIVER QUILTERS PROGRAMS & WORKSHOPS

Fran Oblander  
Chair



**PLEASE JOIN US!**  
**SATURDAY, MAY 11**  
**PALMETTO**  
**ELECTRIC COOP**

1 COOPERATIVE WAY  
HARDEEVILLE SC  
Social—9:30am  
Meeting—10am



### REMEMBER:

- Your Nametag
- Show 'n Tell

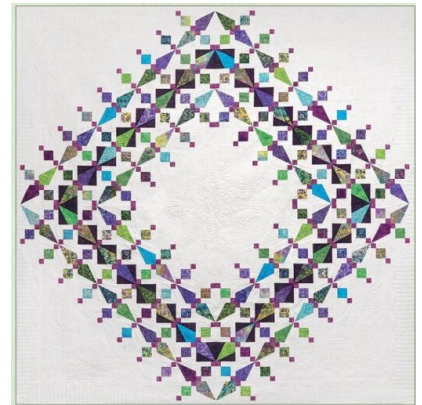
**NEXT MEETING**  
**JUNE 1**

### Sunday, May 5, 2024

*(this is a week prior to our May meeting)*

#### Diana Mann Workshop Via Zoom

*Beaded Lace Quilt.* This quilt uses the Tucker Trimmer and Corner Beam tools. Traditional Corner Beam units are paired with uneven chain units that are trimmed down using the Tucker Trimmer. This quilt comes in three sizes and although it looks as if it's set on point, but it is a straight set quilt.



### Saturday, May 11, 2024

#### Challenge Quilt and Officer Installation

Our challenge quilts, started in August and led by Cathy Dale and her committee, will be presented and judged.

New officers, elected in April, will be installed.



*See General Workshop Information—Page 3*

**PROGRAMS &  
WORKSHOPS**

*Continued*

**Saturday, June 1, 2024**

**Ice Cream Social**

What more needs to be said??? It's ice cream for brunch!



**Watch for New Programs  
and Workshops  
for the 2024-2025 MRQ year!**



**GENERAL WORKSHOP INFORMATION**

Water and snacks will be provided. Lunch is “bring” your own.

Workshop Fee: \$30 (make checks payable to Maye River Quilters)  
Bring to a meeting or mail to Fran Oblander, 27 Heathrow Ave, Bluffton 29910, or pay via PayPal to Maye River Quilters.

## FROM THE PRESIDENT'S DESK

*Judy Hertel  
President*



As we get ready to install the new officers for 2024-2025, I look back on the past year with gratitude. I started as Vice President and was a bit surprised (though not completely) to find myself President just three months into my term. Many of our members said they'd help me navigate the transition, and I am so thankful for their help and knowledge. We've had a fun year and I have learned a lot. I am looking forward to a full term as your President once again. I hope we will learn, laugh, share, support, teach and thoroughly enjoy the time we spend together.

May is a busy month for me. Along with being active in our guild, I am also singing with a chapter of Sweet Adelines International. My chorus, Show Notes A Cappella Chorus, will compete in regionals in mid-May in Orlando, FL. When I miss a meeting or dash out early, it is because of a rehearsal for competition. Like our guild bringing in programs and workshops that inspire and teach us, my chorus also brings in coaches to help up hone our performance skills. In quilting the matching of seams and having perfect point is similar to matching vowels and watching for cut-offs at the end of a phrase. No matter our interests, we are always striving to be better today than yesterday.

Have a fabulous May!



## FIRST RESPONDERS

*Cynthia Cassidy  
Chair*

Cynthia is in need of volunteers to help with table and chair set-up and takedown for the May meeting.

Please contact Cynthia at 614-397-9004.

## MEMBER SPOTLIGHT

### FOUNDER DEBI BACON



1. How long would you say you've been quilting and what was it that got you interested in quilting?

Like a lot of America, the resurgence in quilting during the Bicentennial interested me. I already was a sewist but had never been interested in quilting. Then, in 1983, my aunt, who taught me to sew and who lived in California, went to one of Eleanor Burns "Quilt in a Day" classes. She sent me the book and I proceeded to make about 20 log cabin quilts, tearing the strips. That was the start of an obsession.

2. What was your first quilt and how do you think you've evolved as a quilter from that quilt?

It might have been a star quilt that I hand quilted as I went. I gave it to my sister and she still has it. It makes me cringe to see how simple it was and how big my stitches were. But, I really believe my first quilt was one of the Quilt in a Day log cabins. I tore strips, hung them on a coat hanger and started making blocks. I loved how two colors would play together. I have greatly evolved! I still love traditional, pieced quilts, don't care much for applique or more modern patterns. I'm a better sewer, can cut strips with a rotary cutter better than I can tear them. However, I do NOT mind when a fabric store rips the fabric rather than cutting. Where I'm from in the Midwest, most stores rip! I know that makes some people crazy.

3. What are you working on right now?

Multiple things! My sewing bee is working on our second Block of the Month making a quilt with big stars and pieced flying geese. I'm also working on several Half Pack Quilts (because I think they are like crack cocaine and I can't resist buying them). I'm also making the 6 inch blocks for a Lori Holt Christmas quilt which may or may not ever get done.

4. Tell us about your sewing machine(s)?

I'm a Viking Girl. I owned a machine at 18 (paid \$180) for it, traded it in for a \$600 Brother when I was in my 20's and kept that until my late 30's where I discovered a Viking Designer 1. It was slightly used and \$4,000. When I came home from an all night sew at the fabric store and told my husband I was buying that he said, "Really Debi? \$4,000?" I said, "my gosh, it cuts the bobbin thread and the presser foot goes up and down on it's own; that alone is worth \$1,000!" I still sew on that machine but gifted myself at Designer Ruby when I retired (my main machine now) and two years ago I bought 75Q to use as my travel machine.

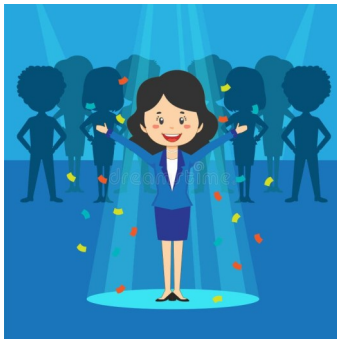
5. Do you prefer hand quilting, machine quilting or sending it out?

I used to send mine to a quilter in Kansas but I learned to longarm on a APQS Millie before I retired. When I moved here I contented



**MEMBER  
SPOTLIGHT**

**FOUNDER  
DEBI BACON**



myself with renting at Colonial Quilts on a Handi Quilter (which I hated) until I bought myself a Millie in 2015. I've been quilting my own since and occasionally will quilt for others.

6. Do you sew on the dining table or do you have a dedicated space? I have a dedicated FLOOR! We owned a house with three bedrooms and I sewed in one, longarmed in the other but the longarm went corner to corner to fit. Six years ago I bought a bigger house with an upstairs. I sew in the large, open space, long arm in the bedroom, store my fabric in Ikea Billy bookcases in another room and go to the bathroom when I need to! Keeps me from having to go up and down the stairs. It is the most wonderful space; I can see out the window to my lagoon and can even see what my neighbors are doing in their back yards (looking at your Susan Dykes!)

7. Name 3 of your favorite fabric designers. Carrie Nelson (she now works for Moda but used to own Miss Rosie's Quilt Company); Bonnie and Camille and am starting to adore Lori Holt.

8. Is there a fabric range that you're drooling over? I am ALWAYS drooling over the latest Moda lines. If I were Queen of the World with Unlimited Money, Moda would mail me a fat quarter bundle of everyone of their collections. I'll never be Queen, but winning the lottery might put me in the same position.



## FUNDRAISING

Jane Warren

Chair



## MRQ BEE KEEPER

Judy Hertel



**IMPORTANT!** Just a quick reminder regarding the birthday bundles. Once our break is done and our programs begin, we will end the bidding on our birthday bundles. This way, we can give our undivided attention to the program portion of our meeting. Thanks for your understanding in this matter.

**May 11 meeting:** Birthday bundles

**June 1 meeting:** Birthday bundles



Looking for a small group to stitch with or share ideas? We might have just the group for you! Below is a list of our Bees and the contact person. You just may fit right into one of these groups.

**Scrappy Ladies**—meet 4th Sunday of each month at the Blue Heron.

Contact Lill Helming,

**Threadheads**—meet 3rd Thursday in members homes. Judy Hertel is the contact. This group is currently full.

**Judy Niemeyer Group**—meet 3rd Tuesday of the month at Savannah Sews, Pooler GA. Contact Karen Park-Bigelow

**Applique Group**—Contact Cathy Dale or Joyce Haskins

We are always looking for new Bees to start. If you have any idea for a new group, please contact Judy Hertel.



## Happy Birthday to our May gals!

4 - Kristine Richardson    6 - Dayna Weinert

8 - Brenda Dyer            9 - Linda Farineau

13— Verity Creekmore    14— Kristal Woehlke

16— Linda Solis

**MEMBERSHIP**

Linda Farineau  
Chair



**Total Paid Members: 133**

**March Meeting:** 69 members, 14 visitors

**April Meeting:** 63 members, 7 visitors



**APRIL NEW MEMBERS**

*Please be sure to welcome and introduce yourself to FIVE new members who joined our guild last month:*

*Jean Shaver, Cathy Todd, Jan Barishman,  
Kay Larson and Teresa Gish*

*Welcome to our guild! We are looking forward to getting to know you better in the coming months! If you have any questions, please be sure to come to the membership*



All members contact information can be found on the guild website,  
[www.mayeriverquilters.com](http://www.mayeriverquilters.com)

If you require assistance logging in to the guild member section of the website, please contact Karen Park-Bigelow

## MEMBERSHIP

Linda Farineau  
Chair



## MEMBERSHIP RENEWAL TIME IS NOW!!!

I am thrilled that we had 87 members renew their membership and pay their dues at the last two guild meetings!!! Thank you to those member!

We still have many of you who have not renewed your membership. If you are intending to renew your membership, please do so at this month's meeting. Dues are \$30 annually—from June 1, 2024 to May 31, 2025. **There is a late fee of \$5 for members if you pay your dues after May 31st.**

I KNOW that you do not want to fill the membership form, but please do. I have seen many changes/updates that we need to make to our membership directory from the renewal forms. Thank you for your help with this—I really appreciate it!

Payment can be made by check to **Maye River Quilters** or **MRQ**, cash or PayPal. (PayPal charges our guild a \$2.00 fee per transaction so we would prefer a check or cash. Please bring exact change if possible).

I will have a table set up just for membership renewals and those joining our guild. To help expedite this process, you will find a copy of the 2024-2025 Membership Form as an attachment to this newsletter email. Please print it off, fill out this form and bring it with your check for \$30.00 to one of next guild meeting. Otherwise I will have forms available at the meeting.

If you have any questions, please be sure to me know by calling or texting, 978-464-0585.

Looking forward to seeing you at our May meeting!



PLEASE put your nametag in your purse or tote bag. I know that many of you have made your Maye River nametag. (if you did NOT get an embroidered name tag, please be sure to see me at the Membership table).

But every month, it is left home inadvertently. Please put your nametag in your purse or the tote bag that you normally bring to our monthly meetings. Nametags are such an important way to get to put a name and a face together and makes everyone feel more welcome/at ease.

Plus as you have heard me state on several occasions, I am thrifty and hate spending money each month on labels and ink. Each month we use at least 12-18 nametag labels.

Let's make an extra effort to put our nametags into a favorite bag that we can designate our Maye River Quilt Guild bag and wear our nametags each month at our meetings.

Thanks so much for your help with this!



## RAFFLE QUILT

Karen Park-Bigelow

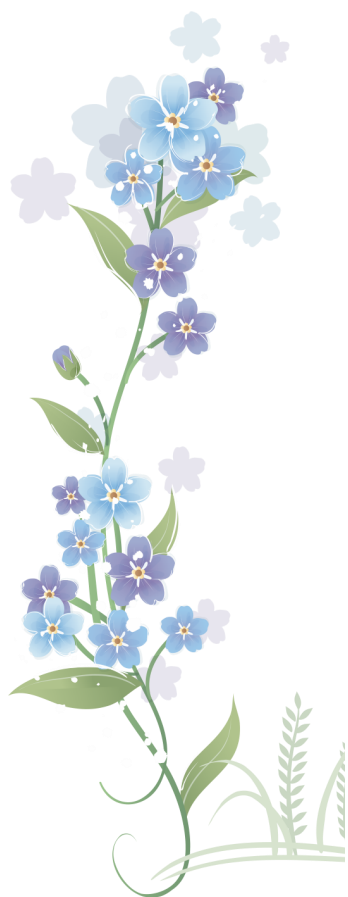
## 2024–2025 RAFFLE QUILT

*The Scrappy Ladies Bee has finished piecing the top for our 2025 raffle quilt. It is now in the hands of Cynthia Cassidy for quilting. Stay tuned for September viewing!!!*



**CHALLENGE  
QUILT**

*Cathy Dale*



**WELCOME TO MY GARDEN**

2024 Challenge Quilt

It's almost May!

We are so excited to see what everyone has created!

Remember the challenge quilt must have the following elements if you want it to be judged. You need to have a bird, an insect, an animal and an embellishment.

Your entry must measure at least 24"x24" and have a 4" hanging sleeve on it as well as a tag with your name on the back.

You will have a piece of muslin that you will cover this up with and you will also have a number for your quilt.

You need to contact Cathy Dale prior to the May meeting to give her the size of your quilt and get your entry number and muslin piece of fabric.

If anyone has a quilt rack or a display board that they are willing to share for the challenge quilt reveal. It would be greatly appreciated. Please let Cathy know.

It's going to be a great day!  
Thanks to everyone!

If you have gently used items and want to clean out your sewing room, you can bring your quilt-related items for the Free Table. Once on the table, anyone can help themselves. Anything left on the table after the meeting **MUST** be taken back home with you or it will be thrown out.

**GUILD MEETING  
MINUTES  
APRIL 6, 2024**

*Liz Penke  
Secretary*

Maye River Quilt Guild  
Palmetto Electric Community Room

Meeting was called to order at 10:01.

Guild Friends: There were many visitors.

Jan Barishman was introduced by Barb Barrett

Kay Larson was introduced by Lill Helming

Jane Lundblad

Karen Wendel were both introduced by Karla Ward

Jean Shaver

Cathy Todd were both introduced by Cathy Dale

Theresa Gish was introduced by Martha Greenly

The minutes from the February meeting were presented for approval.

Motion to approve minutes Suzanne McClure

Seconded by Fran Oblander

Motion passed.

Treasurers report: Currently \$1100.00 under budget.

Membership: Members present 64 ~

Visitors 7, 5 were new members

133 total members

A special thank you to the helpers Suzanne McClure, Sharon Snoddy, Eileen Keohane, Linda Forry and Kim Denmark who were very helpful collecting dues, manning the welcome table and with guild friends.

Programs and Workshops: Diane Mann zoom workshop has 6 spots remaining.

Challenge quilt: There is a need to know the size of and will be given a number for the submitted quilts. The quilt needs a label on the quilt and each will be given a piece of muslin to cover the label.

Need quilt racks.

Arrive early for set up at 9:00.

There will be a viewers choice award. Members vote.

Hospitality: We will all be enjoying an ice cream social in June. Ice cream for breakfast.

Fundraising:

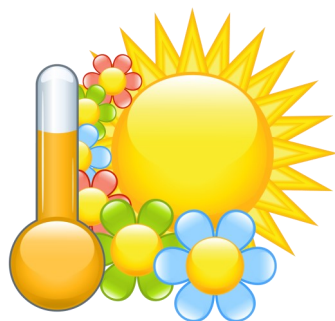
There will be 2 awards presented in May for the Birthday Bundles that raise the most money. First place, \$50.00 gift certificate, second place, \$25.00 gift certificate.

Please include a list of the items in your bundle so we know what we are getting.



## GUILD MEETING MINUTES

*Continued*



Raffle quilt and Website: The quilt is a work in progress. We hope to show it soon.

Newsletter: submissions by March 17th. For newsletter email use the new email, mayeriverquilters.newsleter@gmail.com

10th anniversary celebration:

1/4/2025 we will celebrate our 10th anniversary as guild. Mark your calendars. To celebrate we will focus on our key values charity, education and friendliness. We are requesting donations from the guild of small handmade items to be used as door prizes.

Quilters of South Carolina: All members are eligible to join. Dues are \$20.00 per year. They are having their 2024 Pieceable Retreat in Myrtle Beach October 24-27.

New Business:

- Debi Bacon recommended bed quilts for the inpatient Friends of Caroline Hospice recently opened. They would be single bed quilts for the 6 hospital beds.
- Martha Greenly recommended Habitat for Humanity: there are 11 total homes slated for 2024-2025 at the moment. We could do bed quilts but several of the homes will be finished soon so perhaps we could do wall quilts with appropriate subjects, i.e. Christmas.
- Lil Helming recommended Sleep in heavenly Peace needs bedding for donated beds. We could donate quilts but they also can use gently used bedding of all types.
- Kathy Coates recommended making grocery bags for local residents facilities.
- Kim Denmark recommended foster care bags or throw quilts for children aging out of foster care.

Nominating committee: Slate is

President: Judy Hertel

Vice President: June Jones

Secretary: April Boyd

Treasurer: Suzanne McClure

Member at large: Brandy Yingling

Debi Bacon moved to accept the slate of officers for 2024-2025

Suzanne McClure seconded.



## GUILD MEETING MINUTES

*Continued*

Slate accepted by membership. The new officers will be installed May 11th and will take office 5/1.

Next board meeting will be 4/30/2024 at 7:00 PM on Zoom.

After the meeting, Please help with breakdown of our meeting space. Many hands make light work.

Show and Tell

Short Break

Program: Villa Rosa quilt demonstrations.

Adjourned: 11:55



Submissions for the following month's newsletter must be sent not later than the 17th of the month. Please send all newsletter related items to [mayeriverquilters.newsletter@gmail.com](mailto:mayeriverquilters.newsletter@gmail.com)  
Thank you!!!

**TREASURERS  
REPORT  
MARCH 1—31,  
2024**

*Suzanne McClure  
Treasurer*



	<u>March</u>	<u>YTD</u>	<u>2023-2024 Budget</u>
<b>Beginning Balance</b>	8,930.92	9,485.92	
<b><u>INCOME</u></b>			
Challenge Quilt		150.00	
Fundraising	371.00	3,025.00	3,000.00
Raffle Quilt			---
Membership	1,440.00	2,930.00	3,600.00
Workshop	142.50	3,276.50	2,200.00
Retreat			1,500.00
Other		500.00	500.00
<b>TOTAL INCOME</b>	<b>1,953.00</b>	<b>9,731.50</b>	<b>10,800.00</b>
<b><u>EXPENSES</u></b>			
Accounting		169.90	450.00
Administration		893.72	1,500.00
Charitable Interest		62.41	300.00
Education			---
Fundraising			325.00
Guild Friends			25.00
Hospitality	25.36	215.16	300.00
Insurance		1,538.06	1,600.00
Membership		(5.00)	50.00
Nametags		(5.00)	200.00
Programs		2,657.09	1,900.00
Raffle Quilt			---
Retreat			1,500.00
Social Media		201.16	100.00
Workshops		2,781.36	2,550.00
Other			---
<b>TOTAL EXPENSES</b>	<b>25.36</b>	<b>8,508.86</b>	<b>10,800.00</b>
Net Income	1,927.64	1,222.64	
<b>Ending Cash Balance</b>	<b>10,858.56</b>		



**MRQ 2023—2024  
MEETING DATES**

**Our meetings throughout 2023-2024 will be held at  
the Palmetto Electric Coop, 1 Cooperative Way, Hardeeville**

**Social: 9:30am**

**Meeting: 10:00 (unless otherwise posted)**

**2024**

May 11*	Jun 1	Jul 13*	Aug 3
Sept 7	Oct 5	Nov 2	Dec 7

- Indicates meeting on SECOND Saturday



**MRQ 2023-2024  
BOARD OF DIRECTORS**

	<p><b>President</b> Judy Hertel qwiltygirl19@gmail.com 916-716-3026</p>		<p><b>Vice President</b> June Jones jonesnh@me.com 508-728-6516</p>
	<p><b>Secretary</b> Liz Penke lizpenke@yahoo.com 843-987-0557</p>		<p><b>Treasurer</b> Suzanne McClure suzmcclure@verizon.net 301-367-2021</p>
	<p><b>Member at Large</b> Kris Ducharme kewilson1948@aol.com 239-370-7307</p>		<p><b>Past President</b> Cynthia Cassidy Cynytriplequilt @gmail.com 614-397-9004</p>

## NEWSLETTER

*Gaye Paquet  
Newsletter Editor*

**Craft Confession:**  
Trust me, no one's as shocked as I am that I don't have all the materials I need for this project.



## MAY HOLIDAYS

- 1-May Day
- 2-Brother & Sisters Day
- 4- Kentucky Derby Day (first Saturday)
- 4-Star Wars Day
- 5-Cinco De Mayo
- 5- Ramadan (varies)
- 6-National Nurses Day
- 8- No Socks Day
- 10- Clean Up Your Room Day
- 11- Eat What You Want Day
- 12- Mother's Day (2nd Sunday)
- 15- National Chocolate Chip Day
- 17- National Bike to Work Day (3rd Friday)
- 18- Armed Forces Day (3rd Saturday)
- 18-No Dirty Dishes Day
- 19- World Plant a Veggie Garden Day
- 21- Victoria Day (Canada)
- 22-National Buy A Musical instrument Day
- 23- Lucky Penny Day
- 25- National Brown Bag It Day
- 26-Sally Ride Day
- 27-Memorial Day (last Monday)
- 28-National Hamburger Day
- 30-Water a Flower Day

SOFEESTIVE.COM

Of course you are still a quilter even if you haven't finished a quilt in years. Fabric collecting makes you eligible.



QuiltingSewingCreating

someecards  
user card



**MRQ  
MARKETPLACE**



**FOR SALE**

Oliso Smart Iron  
TG1600ProPlus

Brand new,  
never out of box!

Asking \$130  
Regularly \$199

Contact  
Kathy Pierce  
516-639-2970



*If you have something to sell, trade,  
or something you are looking for,  
please have it posted here!*

*Our marketplace has amazing results!!!*

**QUILT SHOWS  
AND  
EVENTS  
CALENDAR**

**MAJOR QUILT SHOWS  
MAY 2024**



Original Sewing & Quilt Expo	New Orleans LA	May 2—4
Rock Around the Block	Salisbury NC	May 3—4
World of Quilts XLIII	Purchase NY	May 4—5
Quilt, Craft & Sewing Festival	Boise ID	May 9—11
Quilt, Craft & Sewing	Salt Lake City UT	May 16—18
A Garden of Quilts Show	Flat Rock NC	May 17—18
Heart of the Valley Quilt Show	Modesto CA	May 17—18
Follow Your Heart Quilt Show	Winston-Salem NC	May 18—19
Genesee Valley QuiltFest	Rochester NY	May 17—19
Quilt, Craft & Sewing Festival	Castle Rock CO	May 30— June 1
North Country Quilt Guild Show	Clayton NY	May 31— Jun 2
Every quilt is a Memory Quilt Show	Prescott Valley AZ	May 31— June 1

Q A S **QuiltWEEK**  
SHOWS

## Upcoming Quilt Shows

- Grand Rapids, MI: August 21-14, 2024
- Lancaster, PA: September 11-14, 2024

Show Hours: Wed-Fri: 9am—5pm Sat: 9am-4pm

A vintage advertisement for a sewing machine. The ad is framed by a colorful, striped border. On the left is a black and white photograph of a man and a woman. The woman is seated at a sewing machine, and the man is standing behind her, looking at her. The text on the right reads: "Yes, Dear... Always Remember: Flowers Wilt, Jewelry Tarnishes, Candles Burn Out, Candy makes me Fat... But Fabric is Forever!". At the bottom right, there are two website addresses: "Quiltville.blogspot.com" and "Facebook.com/QuiltvilleFriends".

Vive St. Anne.

**Yes, Dear...  
Always Remember:  
Flowers Wilt,  
Jewelry Tarnishes,  
Candles Burn Out,  
Candy makes me Fat...  
But Fabric is Forever!**

Quiltville.blogspot.com Facebook.com/QuiltvilleFriends